

Rosetta Stone®  
Standalone License  
***Installation Guide***

This Guide Will Show You How To:

Install the Student Management System .....	1
Set Up the SMS.....	2
Install Rosetta Stone .....	4
Configure Rosetta Stone ( <i>If Needed</i> ) .....	4
Begin Lessons .....	4

**Start Here**





## Need Help?

Online Knowledge Base:

[www.RosettaStone.com/support](http://www.RosettaStone.com/support)

Live Technical Support: 1-800-280-8172

Weekdays, 9am – 8pm (Eastern Time)

# Rosetta Stone® Standalone Installation Guide

**Technical note regarding Firewalls:** Because Rosetta Stone uses Internet Protocol (but does not actually connect to the Internet), you may receive a message that Discover, Java, JavaSvc, or Macromedia Projector is attempting to connect. If prompted, click **Allow**.

The **Student Management System (SMS)** is an optional component you can use to guide and monitor one or more students. See the *Student Management System Manual* for more information.

- To install the Student Management System, begin at Section A.
- To run Rosetta Stone without the SMS, skip to Section C: Install Rosetta Stone.

## A Install the Student Management System (SMS)

- ! For best results, install the SMS first, and then install the Rosetta Stone Application.

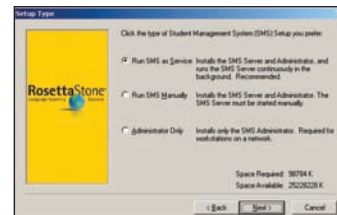
**Note:** You can install the SMS either on an individual workstation with a static IP address or on a server.

- 1 Insert the Student Management System CD-ROM into your computer or a server on your network.

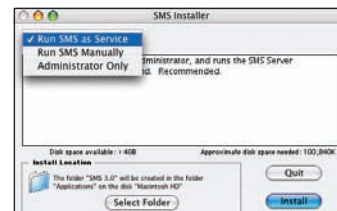
Windows: When the dialog box appears, click **Next** to start the installation.

Macintosh: Double-click **SMS Installer**.

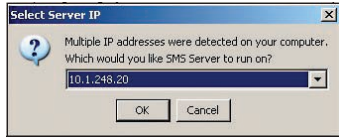
- 2 Leave **Run SMS as Service** selected. Windows: Click **Next**. Click **Yes** to add desktop icons.



Macintosh: Click **Install**.

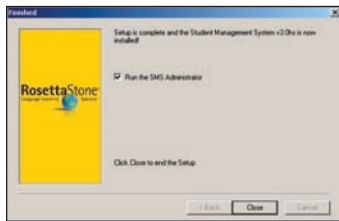


- 3** If you have more than one IP address on your computer, the following screen appears during installation:



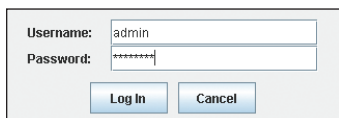
Select an IP address from the pull-down menu to direct the SMS Installer to run the SMS Server on that IP address.

- 4** Windows: When you reach the **Finished** screen, leave **Run the SMS Administrator** selected and click **Close**.



Macintosh: When your installation is complete, go to **Applications** → **SMS 3.x** and double-click on **Administrator**.

- 5** In the SMS Administrator screen, log in with Username: **admin** and Password: **password**. Click **Log In**.



- 6** Click **No** when prompted to make a backup of the database.

After your students start working, click **Yes** once a week. The database backup is created as a time- and date-stamped file in the SMS folder on your hard drive.



## B Set Up the SMS

*Note: If you have installed the SMS, follow these steps for the initial set up of the SMS. You can return to the Wizard at any time to add more Instructors or Students.*

- 1** In the Menu Bar, select **File** → **Setup Wizard**. With **Set Up Instructors** selected, click **Next**.

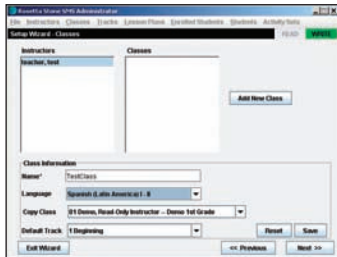


- 2** To create a new Instructor, click **Add New Instructor** and enter the Instructor information. To allow the Instructor to add Students and Instructors, check the box to **Grant Administrator Access**. Click **Save** and click **Next**.

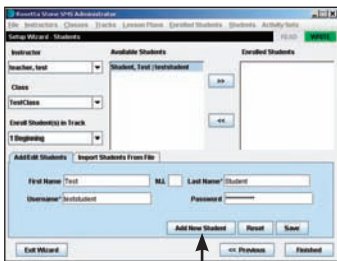
*Note: Administrator Access should be granted sparingly because it locks the SMS for editing.*



- 3** To create a new class, click **Add New Class**. Fill in the **Class Name**, select the **Language**, select a class from the **Copy Class** list and select a **Default Track** to use for the class. Click **Save** and click **Next**.

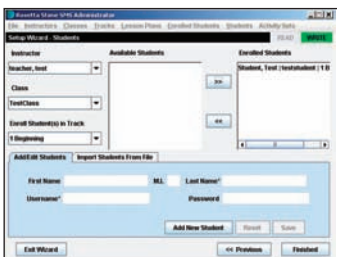


- 4** Click **Add New Student**. Fill in the student's Name, Username and Password and click **Save**. A Password is recommended but not required.



Click to add a student

- 5** Select the **Instructor** and **Class**, and choose a Track to **Enroll Student(s) in Track**. Select the student in the **Available Students** list. Click **>>** to enroll the student.



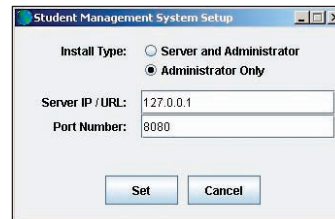
- 6** The student moves to **Enrolled Students**. Click **Finished**. The Setup Wizard closes. Close the SMS Administrator screen.

*Tip: For Instructor workstations, install the SMS as Administrator only.*

- 7** If you are installing the SMS and Rosetta Stone on only one workstation (not a server), follow these steps:

Windows:

1. Select **Start → Programs → Rosetta Stone → Student Management System v3.x → SMS Configuration**.
2. Click **Administrator Only**.
3. Type **127.0.0.1** in the Server IP/URL box.
4. Click **Set**.
5. Restart the SMS Service. Choose **Start → Programs → Rosetta Stone → Student Management System v3.x → SMS Service v3.x → Restart SMS Service**.



Macintosh:

1. Go to **Applications → SMS 3.x** and double-click on **SMS Configuration**.
2. Click **Administrator Only**.
3. Type **127.0.0.1** in the Server IP/URL box.
4. Click **Set**.
5. Restart the SMS Service. Go to **Applications → SMS 3.x → Restart SMS Service**.

## C Install Rosetta Stone

- 1 Insert the Rosetta Stone Application CD-ROM into your computer.

Windows: When the dialog box appears, click **Install**, then **Run Installer**.

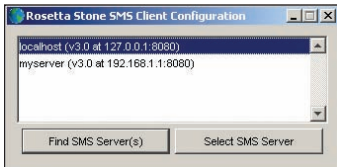
Macintosh: Double-click **Rosetta Stone Installer OS X**.

Follow the prompts to install.

- 2 If you do not plan to use the SMS and did not install it, click the **X** to close the Rosetta Stone SMS Client Configuration window. Go to Section D: Configure Rosetta Stone.

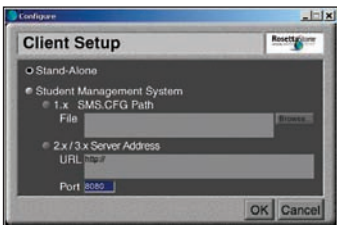
If you installed the SMS, choose the IP address from the list and click **Select SMS Server**. Go to Section E: Begin Lessons.

If no servers are found, close the dialog box and go to Section D.



## D Configure Rosetta Stone (If Needed)

- ! If no server is selected from the previous screen, this screen will appear:



To use Rosetta Stone with the SMS, click **Student Management System** and **2.x/3.x Server Address**. In the URL field, click after the **http://** and type the IP address used by the SMS Server. The default Port is **8080**. Click **OK**.

Or, to run Rosetta Stone without the SMS, select **Stand-Alone** and click **OK**.

If you ever need to return to this screen:  
Windows: Click **Start** → **Programs** → **Rosetta Stone** → [version number] → **Configure Rosetta Stone Client**.

Macintosh: Double-click your Mac hard drive → **Applications** → **Rosetta Stone** → [version number] → **Configure Rosetta Stone Client**.

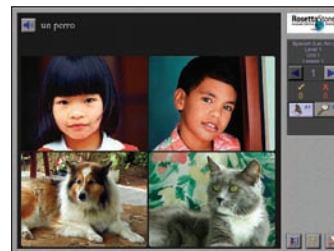
## E Begin Lessons

- 1 Insert the Rosetta Stone Language CD-ROM. Windows: Double-click the **Rosetta Stone** icon on your desktop.

Macintosh: Double-click your Mac hard drive → **Applications** → **Rosetta Stone** → **RS 2.x.Asms** → **Rosetta Stone**.


- 2 On the Login screen, enter the student's **Username** and **Password** and click **OK**. The Rosetta Stone Application starts.

*Note: If you did not install the SMS, you will bypass the Login screen and the Rosetta Stone Application will start.*



For more information about using the SMS, see the *Student Management System Manual*.





[www.RosettaStone.com](http://www.RosettaStone.com)  
135 West Market Street  
Harrisonburg, VA 22801 USA  
540-432-6166 | 800-788-0822 in U.S. and Canada

MAN-CE-STA 0701