

**NOTE:** For best results, plug in your headset **before** signing in to Rosetta Stone TOTALE.™

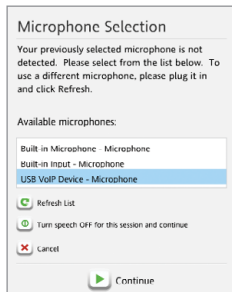
## RosettaCOURSE™

In Rosetta Course,™ you'll listen to native speakers and speak into the microphone. Our speech recognition technology helps you learn to pronounce words correctly.

### A Starting a Lesson

When you first start Rosetta Course, set up your included headset.


- 1 Follow the prompts and make sure your headset is selected.
- 2 Click **Continue**.

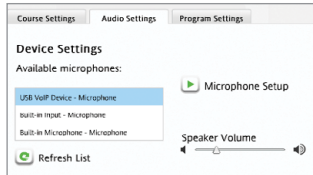


## Set Up Your Headset for Rosetta Stone TOTALE

### B During a Lesson

To adjust your headset in Rosetta Course:

- 1 Click the **Preferences** icon in the toolbar and select **Set Preferences**. 
- 2 On the **Audio Settings** tab, make sure your headset is selected. If your headset is not listed, click **Refresh List**.



- 3 Click **Microphone Setup** and follow the prompts.

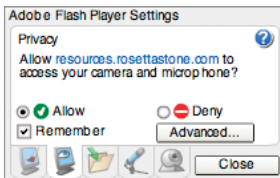
# RosettaWORLD™

In Rosetta World,™ you'll play games and activities to interact with others in your new language. In some activities, you can use your headset to speak and listen to your partner.

## A Starting a Voice Activity

When you start a voice activity in Rosetta World, you'll enable your headset.

- 1 In the Adobe® Flash® Player Settings window, select **Allow**.



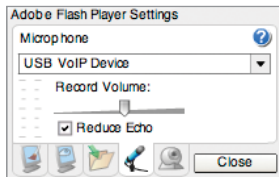
- 2 To avoid seeing this screen again when you start activities, check **Remember**.

- 3 Click **Close** to continue.

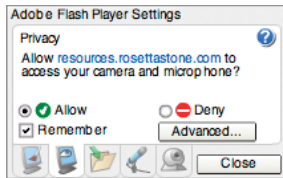
## B During a Voice Activity

To select your headset in a Rosetta World activity:

- 1 Right-click (Windows) or Control-click (Mac) anywhere on the activity screen and select **Settings**.
- 2 In the Adobe Flash Player Settings window, click the **Microphone** Tab and make sure your headset is selected.



- 3 Click the **Privacy** tab and select **Allow**.



- 4 Click **Close**.

# RosettaSTUDIO™

In Rosetta Studio,™ you'll interact with others in a live practice session led by a coach. For the best experience in Rosetta Studio, go to your session *ten minutes early* to test your headset.

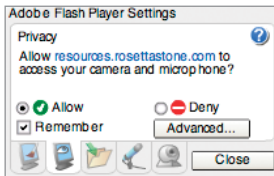
## A Starting a Studio Session

When you begin a Studio Session in Rosetta Studio, you'll set up your headset.

- 1 Select your headset and click **Continue**. Follow the prompts.



- 2 In the Adobe Flash Player Settings window, select **Allow**.

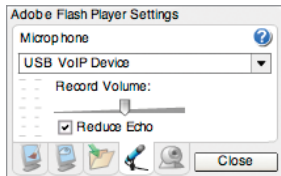


- 3 To avoid seeing this screen again when you start Studio Sessions, check **Remember**.
- 4 Click **Close** to continue.

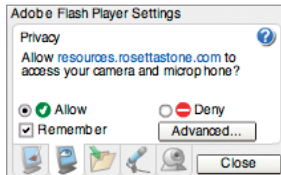
## B During a Studio Session

To adjust your headset in a Rosetta Studio session:

- 1 Right-click (Windows) or Control-click (Mac) anywhere in the Studio screen and select **Settings**.
- 2 In the Adobe Flash Player Settings window, make sure your headset is selected. Adjust the volume and check **Reduce Echo** if needed.



- 3 Click the Privacy tab and select **Allow**.



- 4 Click **Close**.

## Common Issues

- For best results, plug in your headset **before** signing in to Rosetta Stone TOTALe.™ Your headset appears in selection lists as either **USB VoIP Device** or **C-Media USB Audio Device**.
- Plug your headset into a USB port directly on your computer, not into a USB hub or other external device.
- To resolve connection issues with your computer, go to the Sound settings for your computer's operating system. Make sure your headset is selected for both the microphone and the speakers. Follow these steps to adjust Sound settings:

Operating System	Sound Settings
Windows XP	<ol style="list-style-type: none"><li>1. Select <b>Start &gt; Control Panel</b>.</li><li>2. Select <b>Sounds and Audio Devices</b>.</li><li>3. Click the <b>Audio</b> tab.</li><li>4. Under <b>Sound playback</b>, select and adjust your headset speakers.</li><li>5. Under <b>Sound recording</b>, select and adjust your headset microphone.</li></ol>
Windows Vista Windows 7	<ol style="list-style-type: none"><li>1. Select <b>Control Panel</b>.</li><li>2. Select <b>Sounds</b> or <b>Hardware and Sound &gt; Sound</b>.</li><li>3. Click the <b>Playback</b> tab to select and adjust your headset speakers.</li><li>4. Click the <b>Recording</b> tab to select and adjust your headset microphone.</li></ol>
Mac OS X	<ol style="list-style-type: none"><li>1. Select <b>Macintosh HD &gt; Applications &gt; System Preferences &gt; Sound</b>.</li><li>2. Click the <b>Input</b> tab to select and adjust your headset microphone.</li><li>3. Click the <b>Output</b> tab to select and adjust your headset speakers.</li></ol>

## For More Assistance

### Online

Click the help icon () in the Rosetta Stone TOTALe toolbar and select **Contact Support**. Search for "headset" to find articles in our Knowledge Base

### By Phone

Contact our Customer Success Team: (866) 834-6115 (US & Canada only)