



Say hello to Rosetta Stone® English

An adaptive blended learning speaking and listening program that supports students' English language development through academic conversations

Empowering emergent bilinguals to thrive.

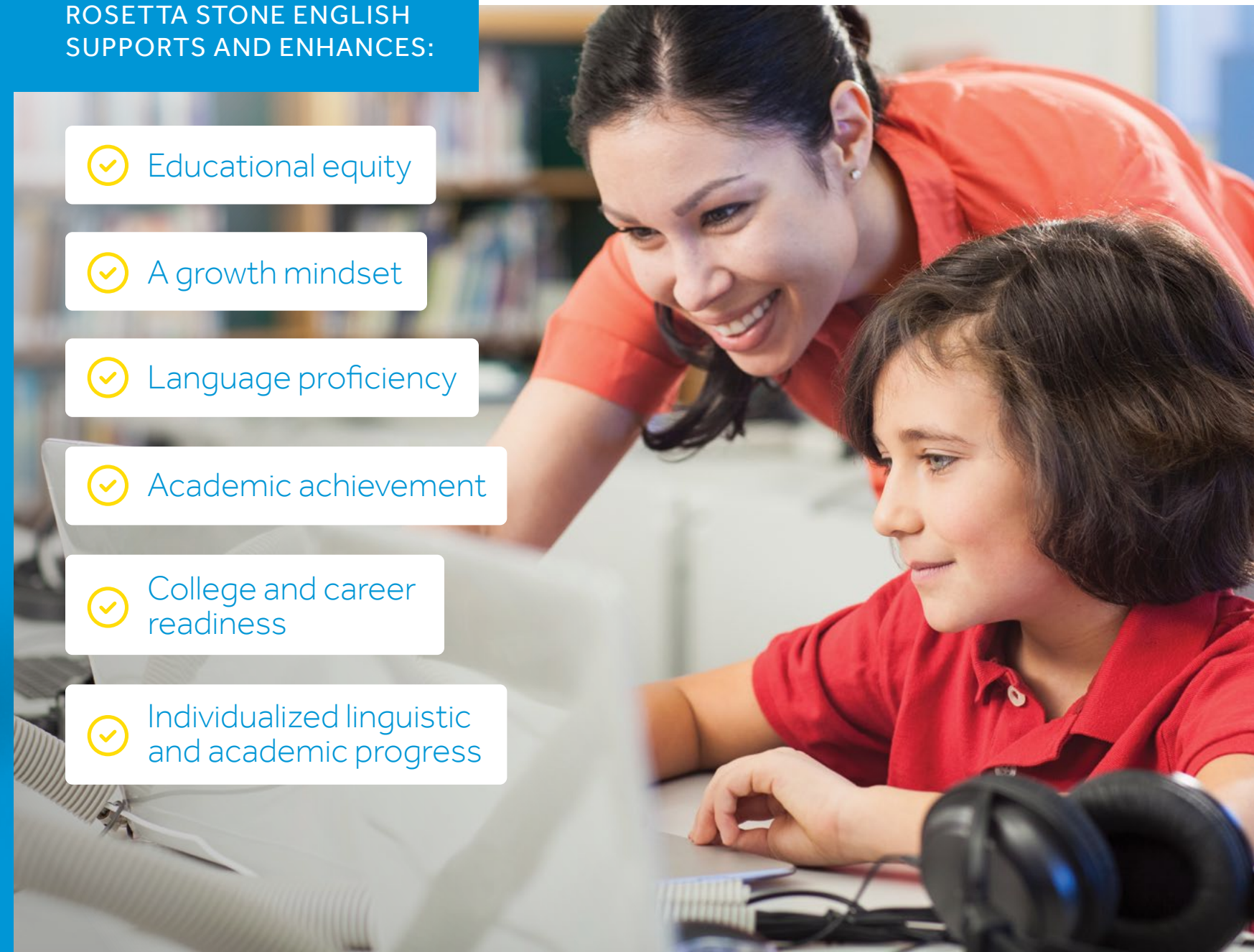


More speaking instruction, practice, and feedback

Rosetta Stone English is designed to help emergent bilingual students, also known as English language learners, in grades K–6 acquire higher language proficiency levels of English. Combining the language and literacy expertise of Rosetta Stone and Lexia Learning, the program blends language learning with subject knowledge to improve academic achievement.

ROSETTA STONE ENGLISH SUPPORTS AND ENHANCES:

- ✓ Educational equity
- ✓ A growth mindset
- ✓ Language proficiency
- ✓ Academic achievement
- ✓ College and career readiness
- ✓ Individualized linguistic and academic progress



Why Rosetta Stone English?

ASSESSMENT WITHOUT TESTING®

Ongoing progress-monitoring data

Reporting at the student, class, grade, school, and district levels

Actionable data for targeted instruction

ALIGNED WITH LANGUAGE PROFICIENCY STANDARDS

WIDA, CA ELD, TX ELPS, and ELPA 21

Rigorous academic content

Supports language acquisition for students at all proficiency bands

ADAPTIVE BLENDED LEARNING MODEL

Individualized learning paths

Independent, student-driven learning

Resources for in-classroom applications

Teacher-led, small-group instruction and practice

CULTURAL RESPONSIVENESS

Views learners' heritage languages and cultures as an asset

Celebrates student achievements

17 emergent bilingual characters support and engage learners

ACADEMIC CONVERSATIONS

Purposeful repetition in different subject areas

Embedded grammar lessons

Offers students choice for intrinsic motivation

SPEECH RECOGNITION TECHNOLOGY

Immediate, guided, corrective feedback

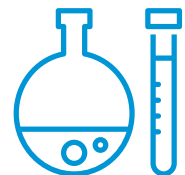
Safe, nonjudgmental environment

Helps students build linguistic confidence in academic English

INTEGRATING SPEAKING, LISTENING, AND GRAMMAR SKILLS IN ACADEMIC SUBJECTS



Math



Science



Social Studies



General Knowledge



Biographies

Personalized instruction for each learner



Culturally and ethnically diverse characters engage and encourage students throughout their learning journeys, while interactive academic conversations empower students to build the linguistic competence and confidence needed for academic success.

TO ADDRESS INDIVIDUAL NEEDS, THE PROGRAM OFFERS:



Standard instruction—students who demonstrate mastery can move through units at their own pace and on to more advanced proficiency levels.



Scaffolded instruction—students who are struggling benefit from scaffolded support and instruction on targeted skills.

Empowering educators to **improve outcomes.**



Adaptive Blended Learning Model

The Adaptive Blended Learning Model has proved to be an effective way to support emergent bilinguals by combining online and offline instruction to accelerate academic English language learning.

TEACHER-LED INSTRUCTION

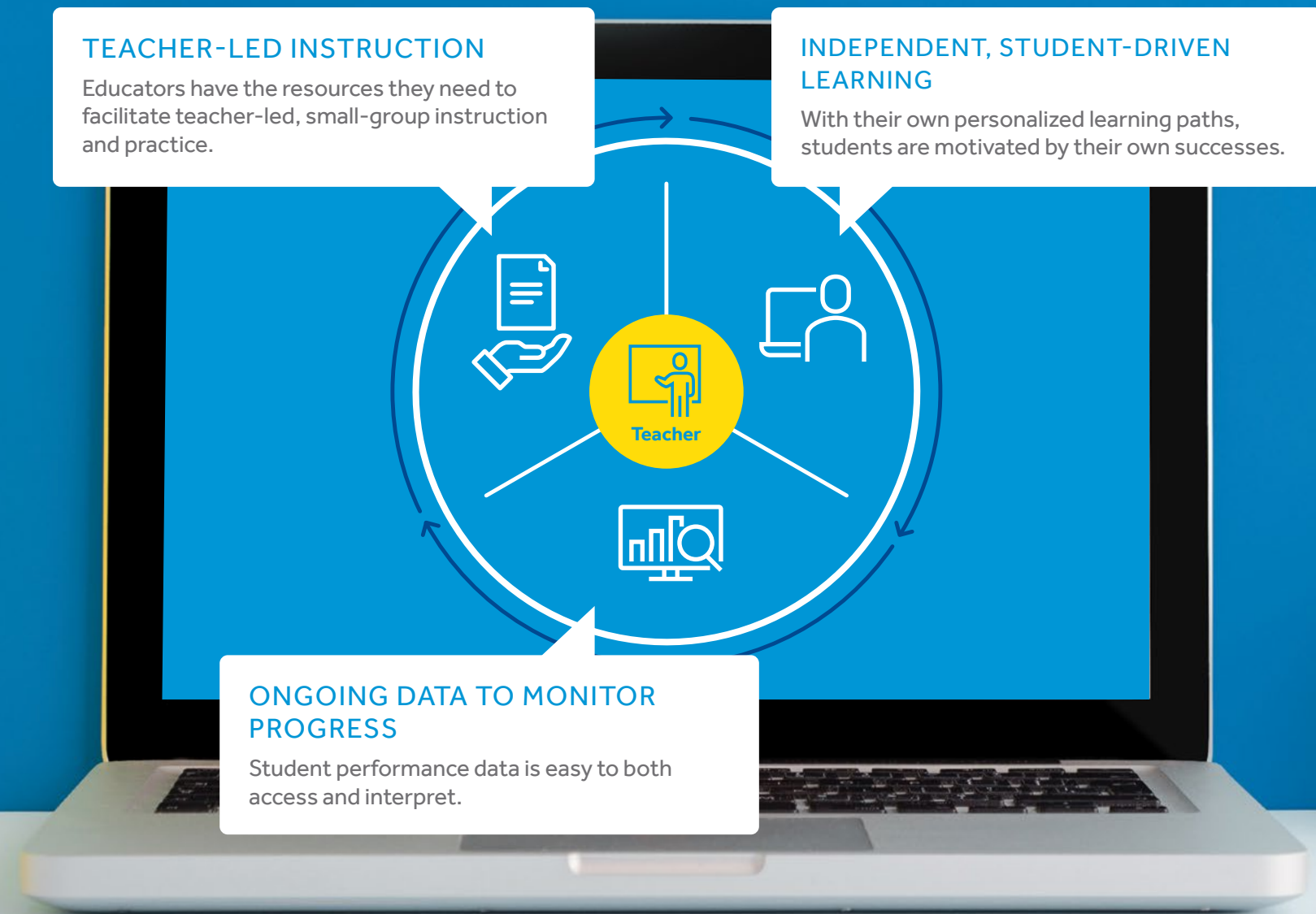
Educators have the resources they need to facilitate teacher-led, small-group instruction and practice.

INDEPENDENT, STUDENT-DRIVEN LEARNING

With their own personalized learning paths, students are motivated by their own successes.

ONGOING DATA TO MONITOR PROGRESS

Student performance data is easy to both access and interpret.



Assessment Without Testing®

The program's patented Assessment Without Testing® technology gathers and analyzes actionable, real-time progress-monitoring data and recommends offline lessons for teacher-facilitated peer-to-peer speaking and listening practice. All reports can be accessed through our easy-to-use Educator Platform.

PROGRAM USAGE

CLASS INSTRUCTIONAL PLANNING

PROFICIENCY STATUS

STUDENT SKILLS AND PERFORMANCE SCORES

Informing instruction and next steps

Reports accessed through our Educator Platform can help educators answer critical questions about learners' program use and instructional next steps.

At what level of content are my students working?

How much time are my students spending on the program each week?

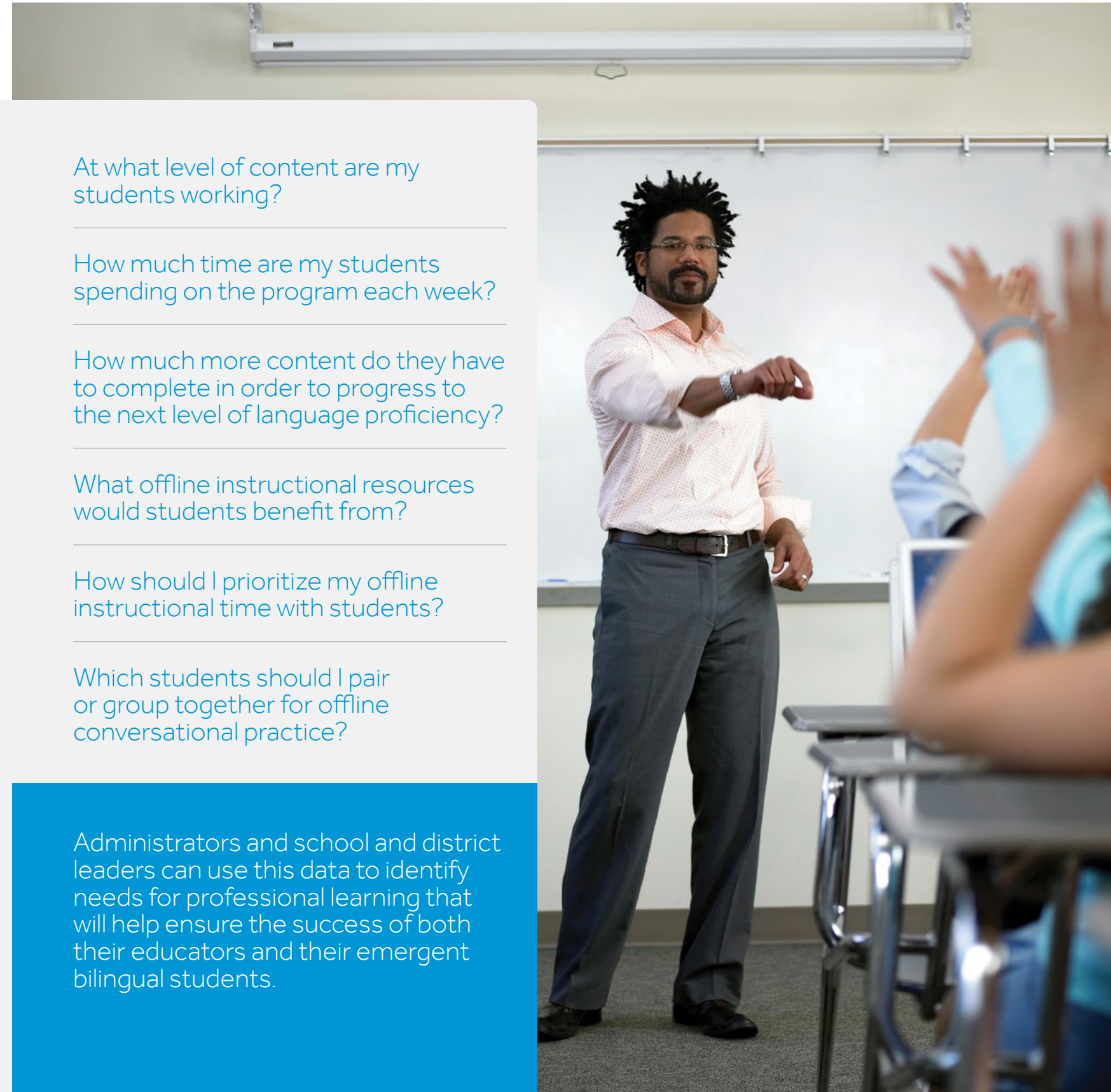
How much more content do they have to complete in order to progress to the next level of language proficiency?

What offline instructional resources would students benefit from?

How should I prioritize my offline instructional time with students?

Which students should I pair or group together for offline conversational practice?

Administrators and school and district leaders can use this data to identify needs for professional learning that will help ensure the success of both their educators and their emergent bilingual students.



What makes Rosetta Stone's Partnerships unique?

Every student, class, and school is unique. That's why Rosetta Stone Success Partnerships are designed with you in mind. Our professional learning and implementation support ensure that goals are achieved and outcomes are met. Our team of language experts is dedicated to developing plans, strategies, best practices, and support for success throughout the school year and beyond.



PERSONALIZED

Rosetta Stone customizes every Partnership so educators and administrators feel confident that all aspects of their professional learning goals are accounted for and modified as needed to accelerate language proficiency.



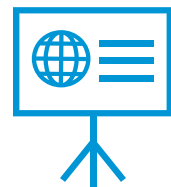
EFFECTIVE

Grounded in research, Rosetta Stone Partnerships leverage the best approaches to deliver the results educators expect across classes, schools, and districts.



ENGAGING

Our professional learning and development sessions create an environment of active participation and interactive learning. Every interaction is inviting, thoughtful, and adapted to deliver active learning strategies.



RELEVANT

Rosetta Stone focuses on the most meaningful components of professional learning that seamlessly support students' ongoing needs, without adding extra work.

“ I would recommend Rosetta Stone English to other educators because it provides a systematic approach to learning English as a second language in an interactive and academically rigorous way. Additionally, the Educator Platform allows me to collect data to make instructional decisions to meet my English learners' diverse needs. ”

Esmeralda Hernández, Bilingual/ESL Specialist,
Marilyn J. Miller Elementary School, Fort Worth, TX

Rosetta Stone English is different. Find out how.

Please contact a Rosetta Stone K–12 language learning consultant:

United States & Canada: 1 (800) 811-2755

Outside of the United States & Canada: +1 (540) 236-5052

rosettastone.com/k12

ABOUT ROSETTA STONE

Rosetta Stone is a global leader in technology-driven language and learning solutions for individuals, classrooms, and entire organizations. Our scalable, interactive solutions have been used by over 12,000 businesses, 9,000 public sector organizations, and 22,000 education institutions worldwide, and by millions of learners in over 150 countries. For more information, visit www.rosettastone.com.

ABOUT LEXIA LEARNING

Lexia Learning, a Rosetta Stone company, empowers educators through adaptive assessment and personalized instruction. For more than 30 years, the company has been on the leading edge of research and product development as it relates to student reading skills. For more information, visit www.lexialearning.com.