



Set Up Your Headset

For best results, use a USB headset with microphone, and plug in your device before signing in to Rosetta Stone TOTALE®

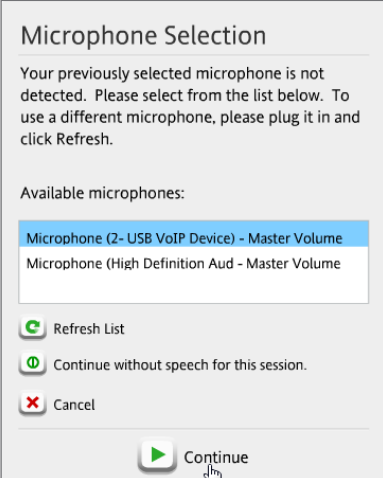
RosettaCOURSE®

In Rosetta Course®, you'll use your headset to listen to native speakers and speak into the microphone. Our speech-recognition technology, which helps you learn to pronounce words correctly, works best when you're using a headset with a microphone.

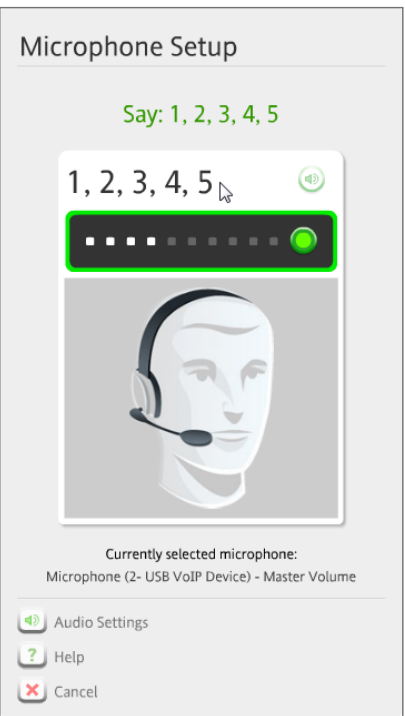
Starting a Lesson

When you begin Rosetta Course, you'll set up your headset.

1. Select your headset and click **Continue**.




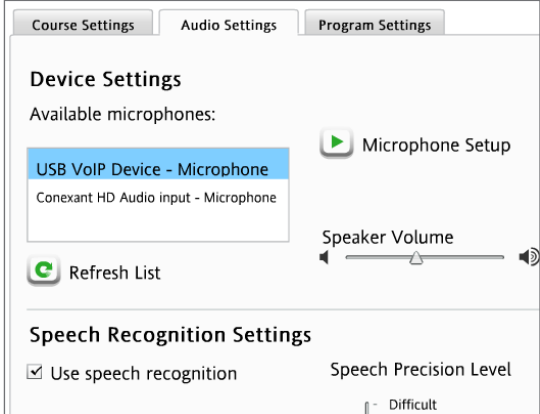
Follow the prompts and speak into the microphone.



During a Lesson

While you are in Rosetta Course, you can select a different headset or adjust the audio settings.

1. Click the **Preferences** icon in the toolbar and select **Set Preferences**. 
2. On the Audio Settings tab, make sure your headset is selected. If your headset is not listed, be sure it is plugged in, and click **Refresh List**.



3. Click **Microphone Setup** and follow the prompts.

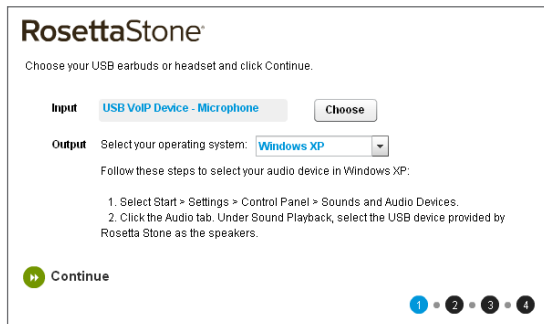
RosettaSTUDIO®

In Rosetta Studio® you'll interact with others in a live practice session led by a Studio Coach. You'll need to use a headset in Rosetta Studio to avoid audio problems such as echo. For the best experience, go to your Studio session ten minutes early to test your headset.

Starting a Studio Session

When you begin a Studio session, you'll set up your headset.

Select your headset and click **Continue**. Follow the prompts.



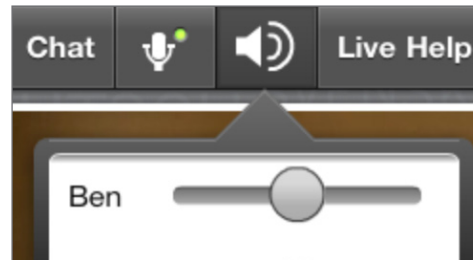
During a Studio Session

If you have audio difficulties during a Studio session, you can adjust the settings or get live help.

Audio Settings

To adjust the audio settings in Rosetta Studio:

- Click the speaker icon to adjust the volume for the Studio Coach and for other learners in the session.
- Click the microphone icon to mute or unmute your microphone.



- Use the **Adobe Flash Player Settings** to select your microphone or reduce echo.

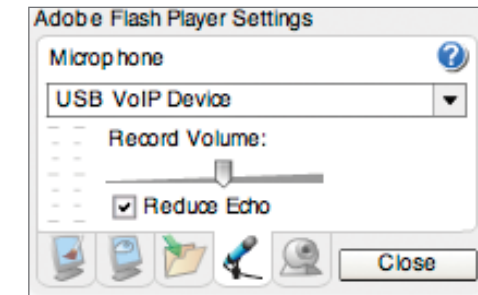
Live Help

If you continue to have technical issues during a Studio session, click **Live Help** in the upper right corner, and a technical support representative will respond promptly.

RosettaWORLD®

In Rosetta World® you'll play games and activities and interact with others in your new language. Often you'll need your headset for speaking and interacting.

You can use the **Adobe Flash Player Settings** to adjust audio settings or reduce echo.



Troubleshooting

- Plug your headset directly into your computer's USB port, not into a USB hub or other external device.
- To resolve headset issues with your computer, go to your computer's Sound Settings. Make sure your headset is selected for both the microphone and the speakers. Follow the steps to adjust Sound settings for your computer.
- Use the Adobe Flash Player Settings to resolve issues such as allowing access to your microphone and reducing echo.

Sound Settings

| Operating System | Steps |
|------------------------------|---|
| Windows XP | <ol style="list-style-type: none"> 1. Select Start > Control Panel. 2. Select Sounds and Audio Devices. 3. Click the Audio tab. 4. Under Sound playback, select and adjust your headset speakers. 5. Under Sound recording, select and adjust your headset microphone. |
| Windows Vista Windows 7/8 | <ol style="list-style-type: none"> 1. Select Control Panel. (Windows 8: Then select More settings.) 2. Select Sounds or Hardware and Sound > Sound. 3. Click the Playback tab to select and adjust your headset speakers. 4. Click the Recording tab to select and adjust your headset microphone. |
| Mac OS X | <ol style="list-style-type: none"> 1. Select Apple menu > System Preferences > Sound. 2. Click the Input tab to select and adjust your headset microphone. 3. Click the Output tab to select and adjust your headset speakers. |

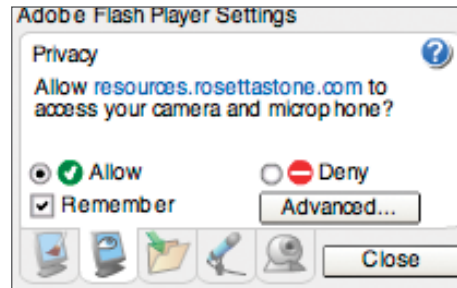
Adobe Flash Player Settings

You'll need to allow Adobe Flash Player to access your microphone in order to speak in audio interactions, such as conversations in Rosetta Studio and games in Rosetta World.

You can also use the Adobe Flash Player Settings to select and adjust your headset and microphone, including troubleshooting issues such as volume and echo.

Privacy Settings

1. If you see the Adobe Flash Player Settings window, select **Allow**.

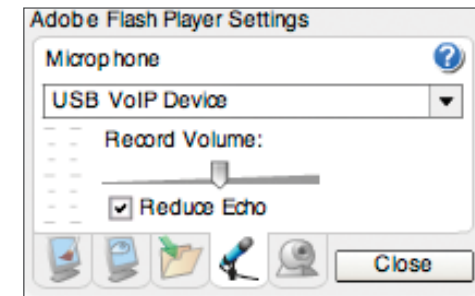


2. To avoid seeing this window again, check **Remember**.
3. Click **Close** to continue.

Microphone Settings

To select your headset or adjust settings such as volume or echo:

1. Right-click (Windows) or Control-click (Mac) and select **Settings**.
2. In the Adobe Flash Player Settings window, click the tab with the microphone icon, and make sure your headset is selected. Adjust the volume and check **Reduce Echo** if needed.



3. Click **Close**.

For More Assistance

For customer support or more information, visit our website: success.RosettaStone.com.